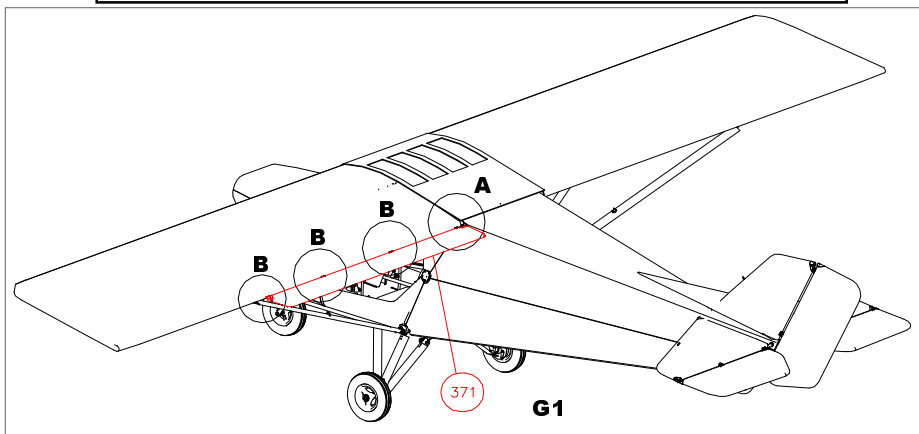
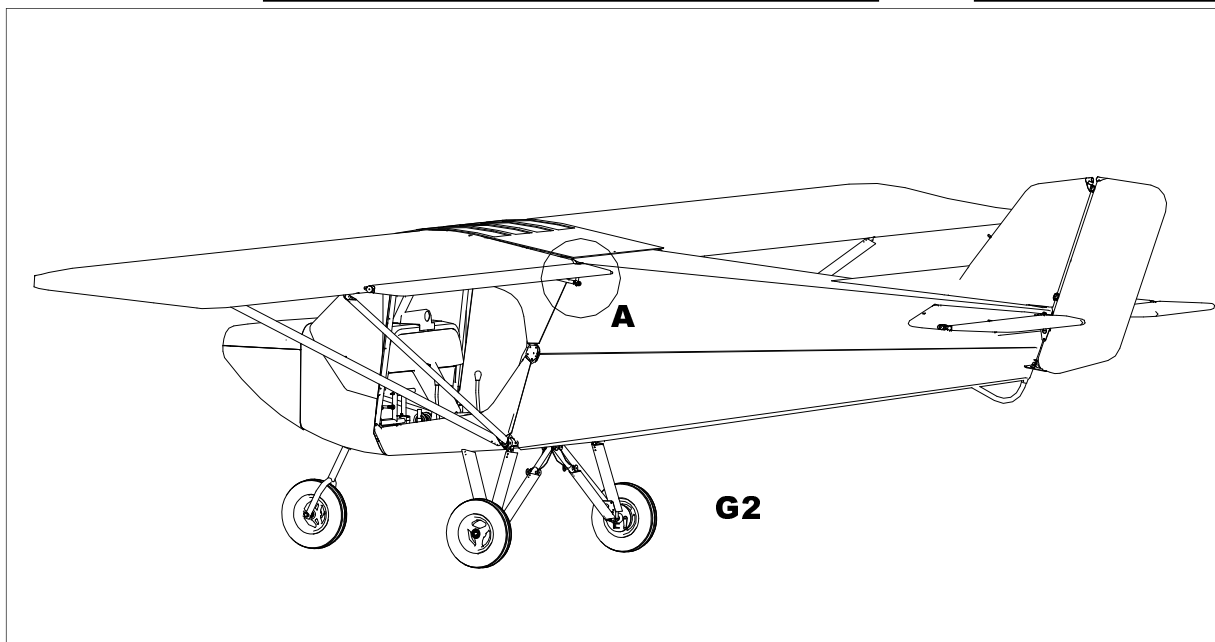


**G / FLAPS AND AILERONS**

**G1)** Install flaps 371.  
the rod ends are set so that the profile axle of the flaps are parallel to the axle of fuselage upper tube.

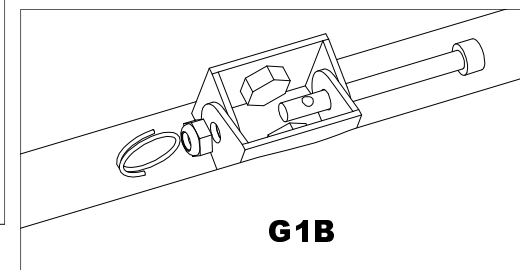
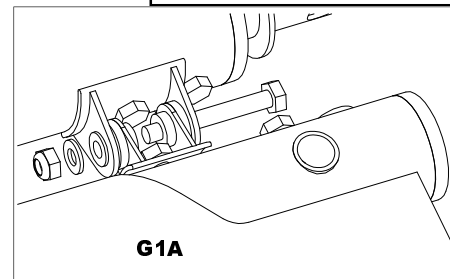


**G2)** Connect the flaps to their control tubes.

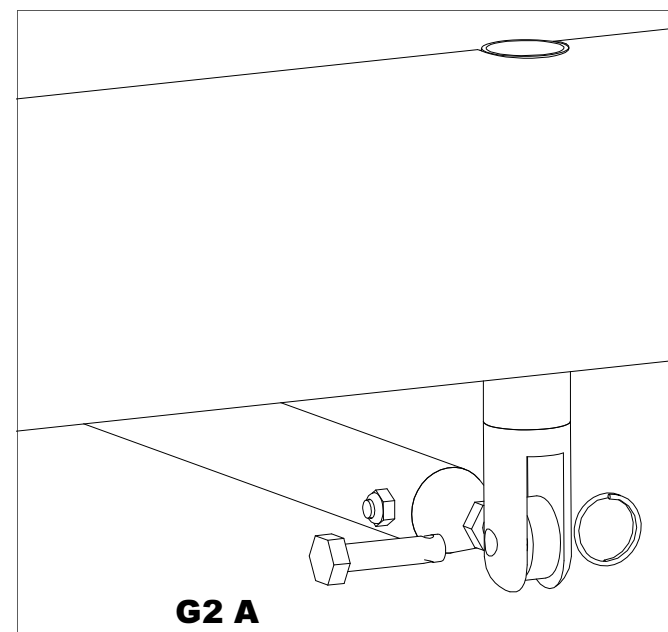


**G / VOILETS ET AILERONS**

**G1)** Poser les volets 371.  
Les rotules sont pré-réglées de façon à ce que la corde du profil de volet soit parallèle à l'axe du tube supérieur de fuselage

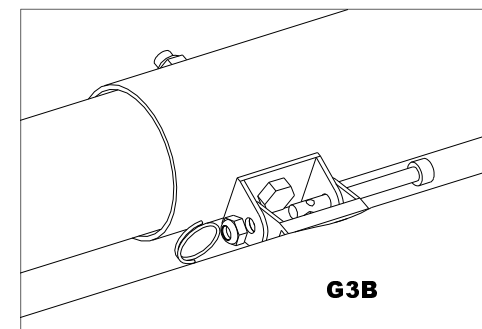
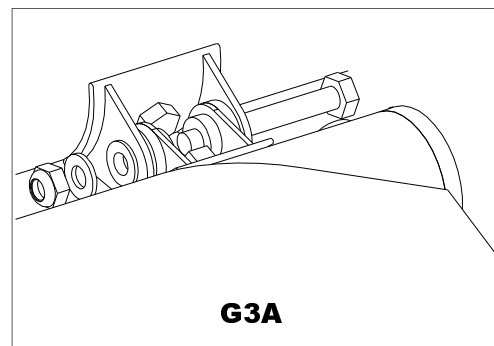
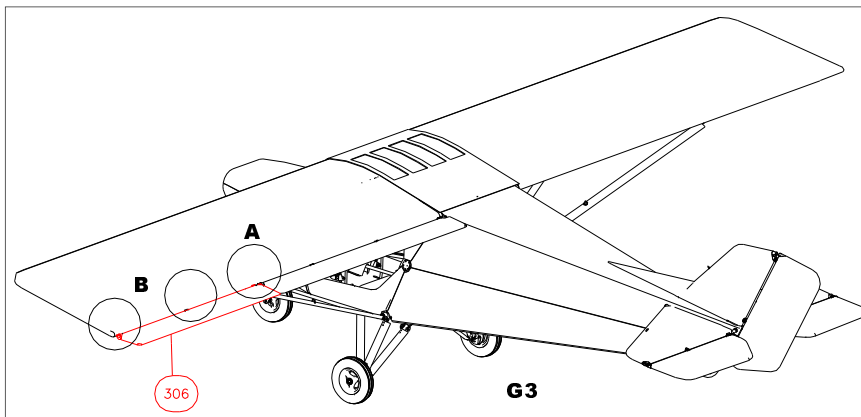


**G2)** Connecter les tubes de commande aux volets.



**G3)** Install ailerons 306.  
 Ailerons being lined up with flaps, check that the control sticks are vertical.  
 If necessary, set the stick by adjusting the aileron cable turnbuckles on the top of cockpit.  
 Secure turnbuckles with brass wires.

**G3)** Poser les ailerons 306.  
 Les ailerons étant alignés avec les volets, vérifier que les manches sont verticaux, si ce n'est pas le cas, ajuster les avec les ridoirs de cables d'aileron dans le plafond de cabine.  
 Sécuriser les ridoirs à l'aide de fil laiton.



**G4)** Connect control tubes on the ailerons and in the cockpit.

**G4)** Connecter les tubes de commandes sur les ailerons et dans le cockpit.

